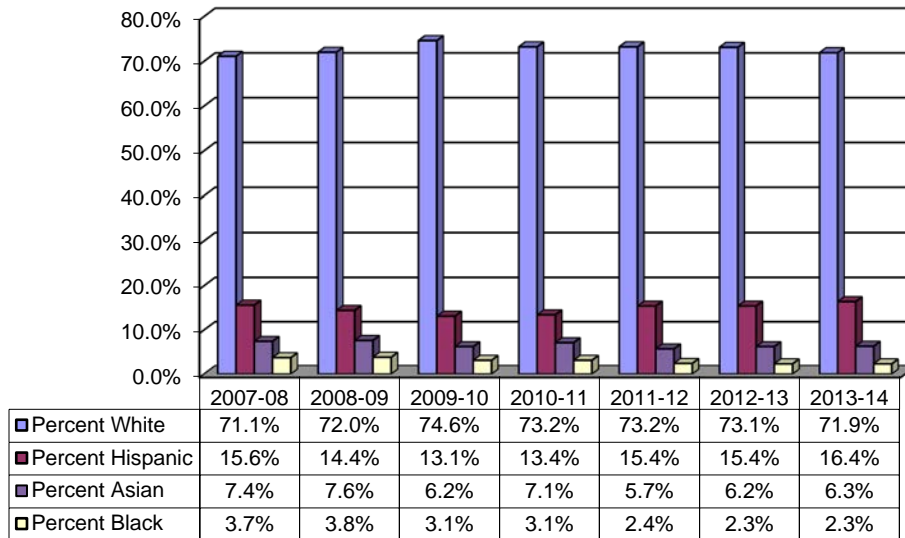


## 13. Staff

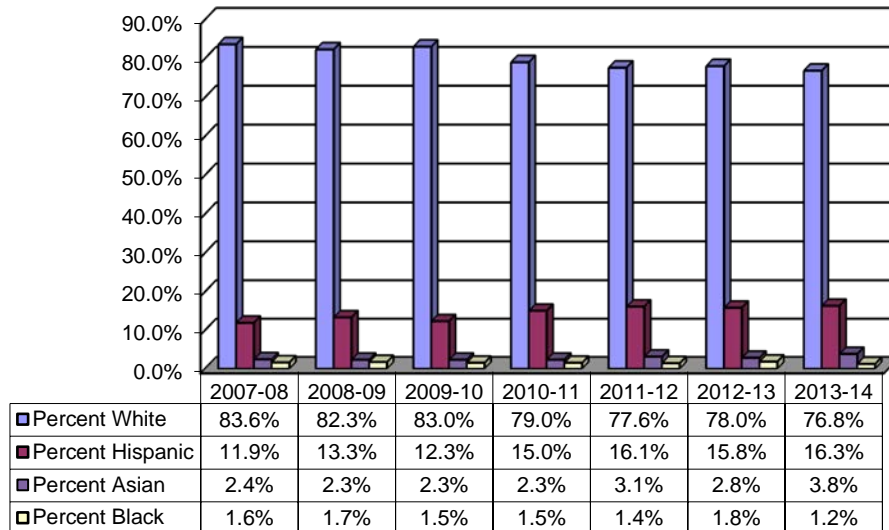
<b>Topic</b>	<b>Page</b>
<i>Staff Employee Historical Ethnicity</i>	<i>13-2</i>
<i>AHC Staff by Ethnicity</i>	<i>13-4</i>
<i>AHC Staff by Age</i>	<i>13-5</i>
<i>AHC Staff by Gender</i>	<i>13-6</i>
<i>Staff Employee Statistical Totals, Historical Comparison</i>	<i>13-7</i>
<i>Staff Employee Statistical Totals, 2012-2013</i>	<i>13-8</i>
<i>Staff Employee Statistical Totals, 2012-2013: New Hires Only</i>	<i>13-10</i>
<i>Staff Employee Statistical Totals, 2013-2014</i>	<i>13-12</i>
<i>Staff Employee Statistical Totals, 2013-2014: New Hires Only</i>	<i>13-14</i>

## Staff Employee Historical Ethnicity Data

### Full-time Faculty



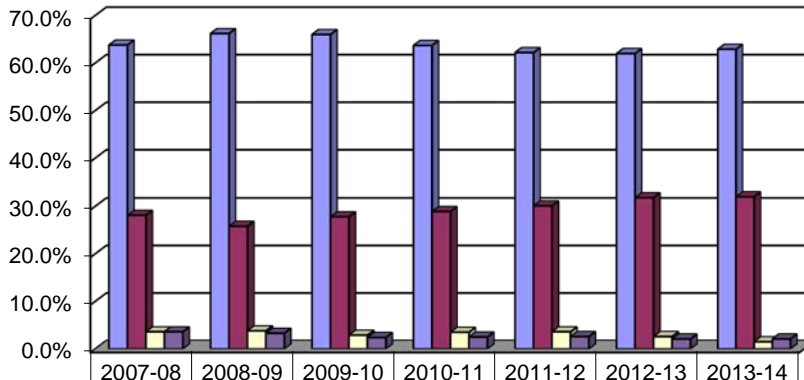
### Part-time Faculty



Among all employee groups at Allan Hancock, the largest ethnic groups are White, Hispanic, Asian and Black. The percent of representation of each ethnic group varies by employee group and over time. Data for full and part-time faculty shows that full-time faculty are increasingly more non-white (28.1%) while 23.3% of part-time faculty are non-white.

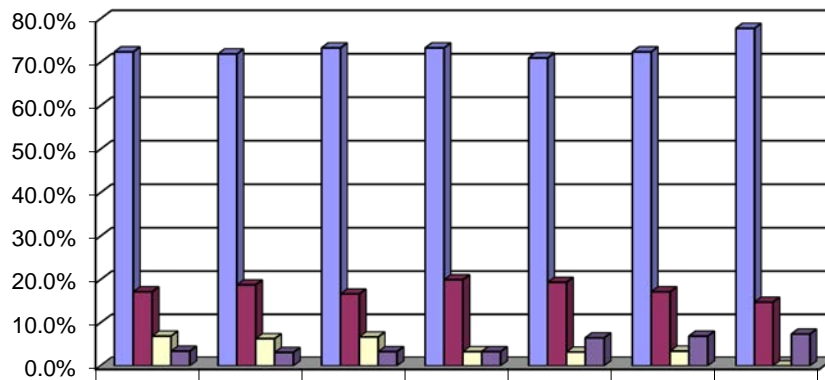
## Staff Employee Historical Ethnicity Data

### Full-time Classified



■ Percent White	63.8%	66.2%	66.0%	63.7%	62.2%	62.0%	62.9%
■ Percent Hispanic	28.1%	25.8%	27.8%	28.9%	30.1%	31.8%	32.0%
■ Percent Black	3.6%	3.8%	2.9%	3.5%	3.6%	2.6%	1.5%
■ Percent Asian	3.6%	3.3%	2.4%	2.5%	2.6%	2.1%	2.1%

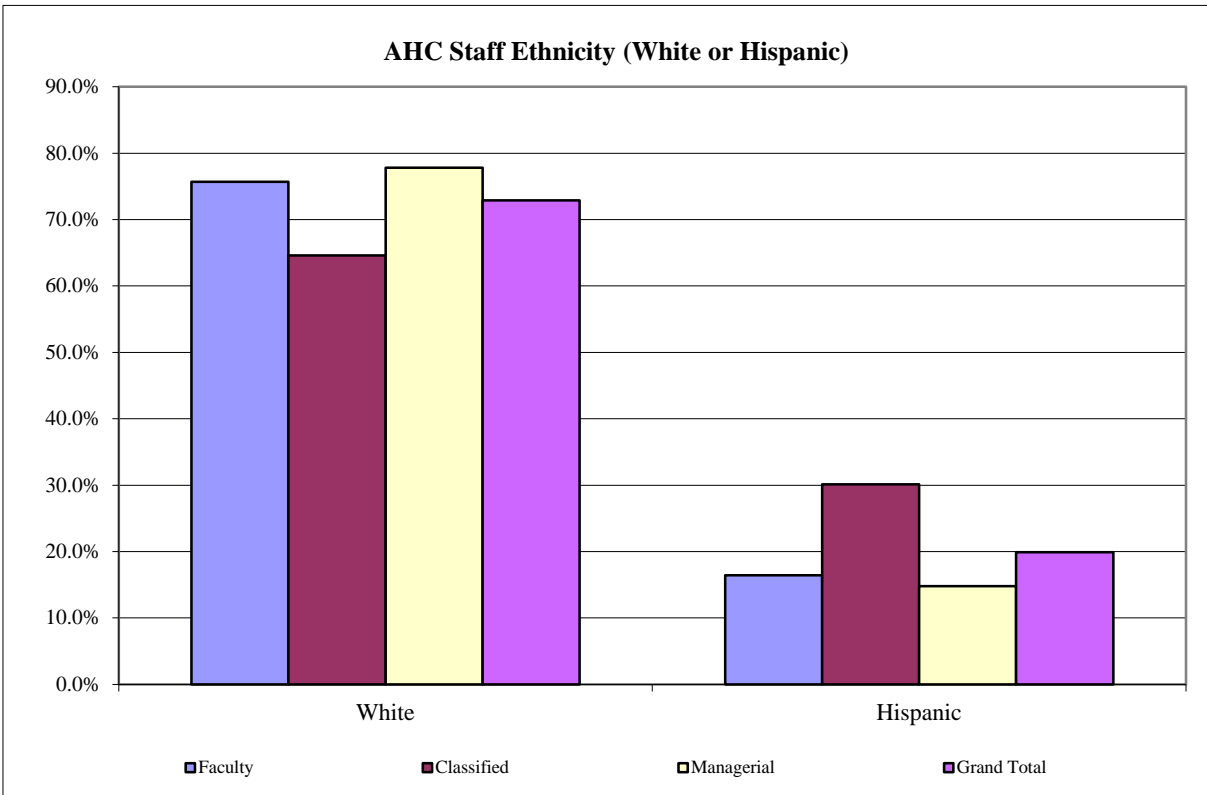
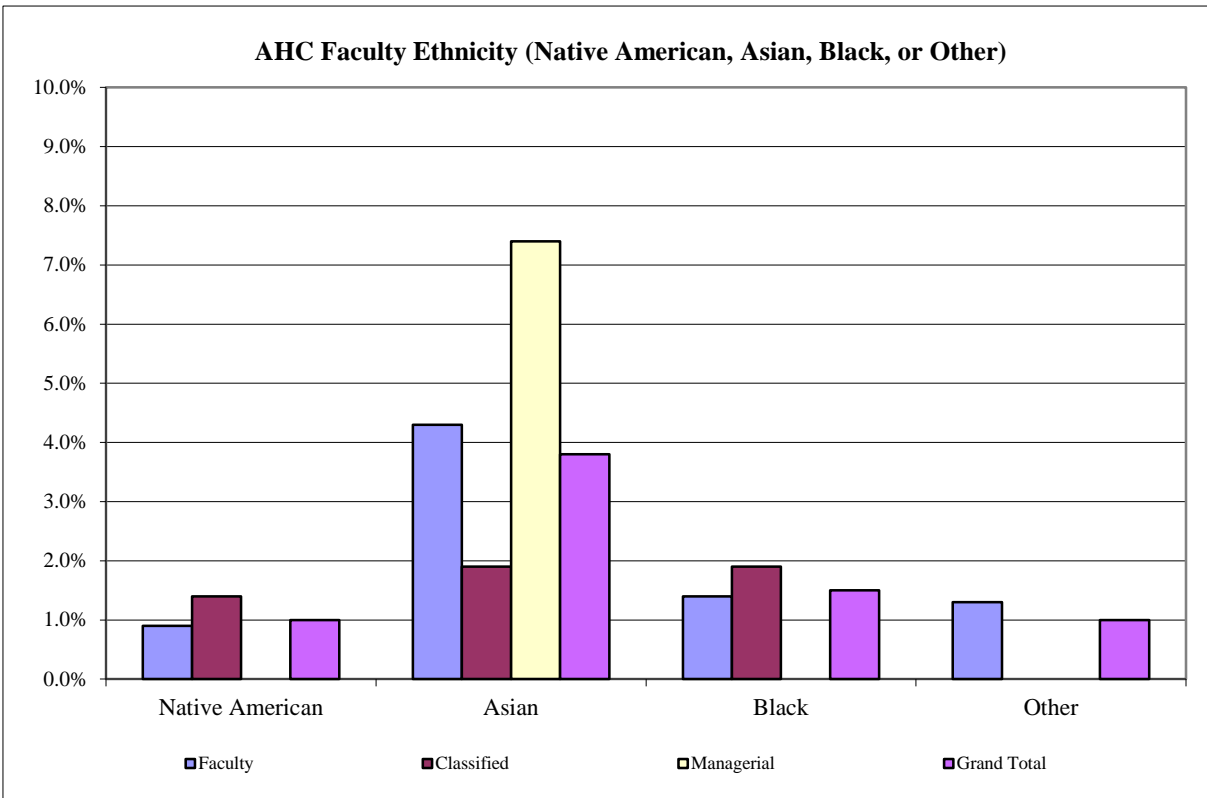
### Managerial



■ Percent White	72.4%	71.9%	73.3%	73.3%	71.0%	72.4%	77.8%
■ Percent Hispanic	17.2%	18.8%	16.7%	20.0%	19.4%	17.2%	14.8%
■ Percent Black	6.9%	6.3%	6.7%	3.3%	3.2%	3.4%	0.0%
■ Percent Asian	3.4%	3.1%	3.3%	3.3%	6.5%	6.9%	7.4%

More diversity is found among the full-time classified employees than among faculty. Classified employees were 32% Hispanic at the time of the snapshot. Approximately 15% of the managerial staff are.

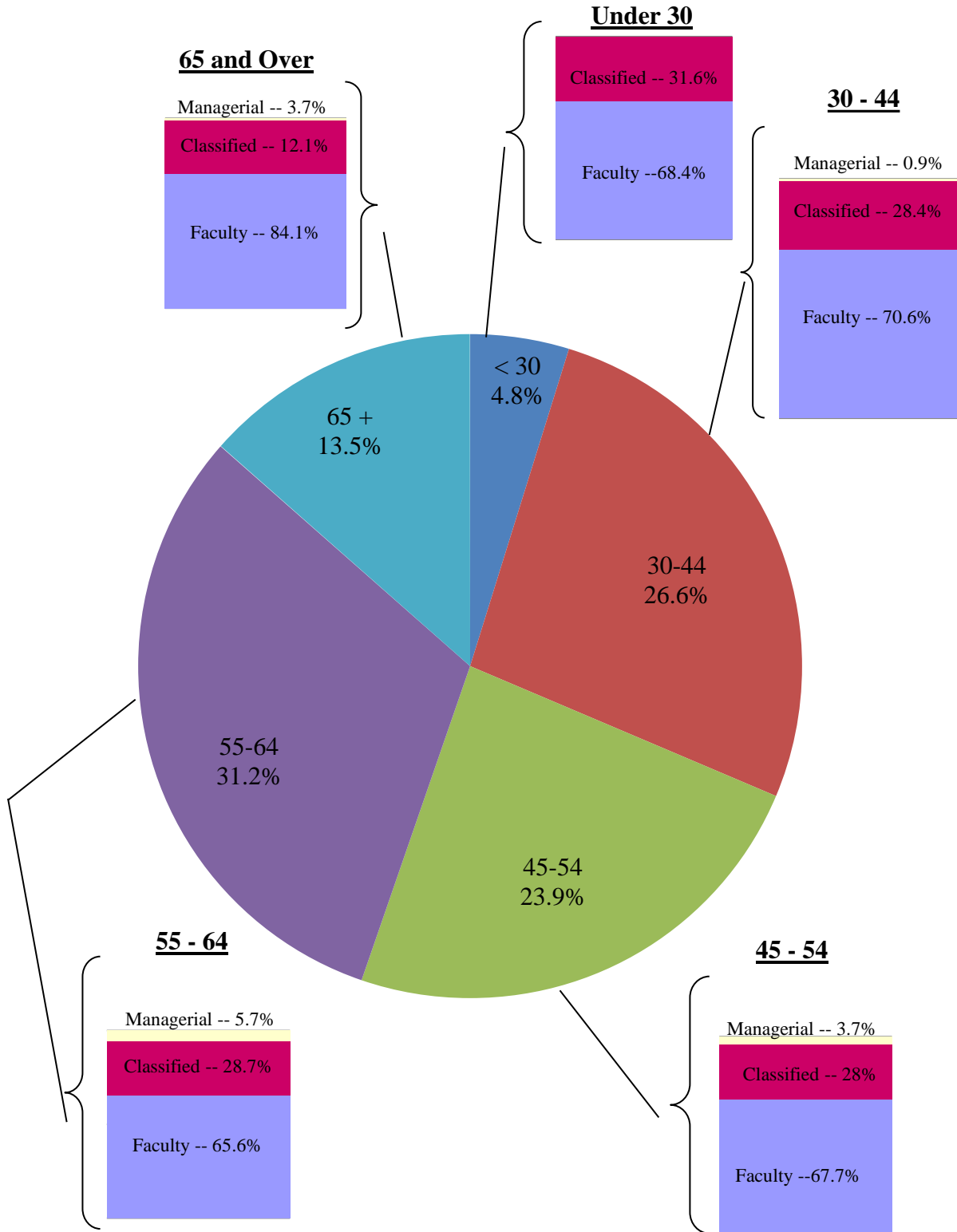
## AHC Staff by Ethnicity: 2013 to 2014



*\*This report includes staff data from Nov. 1 to Oct. 31*

## AHC Staff by Age: 2013 to 2014

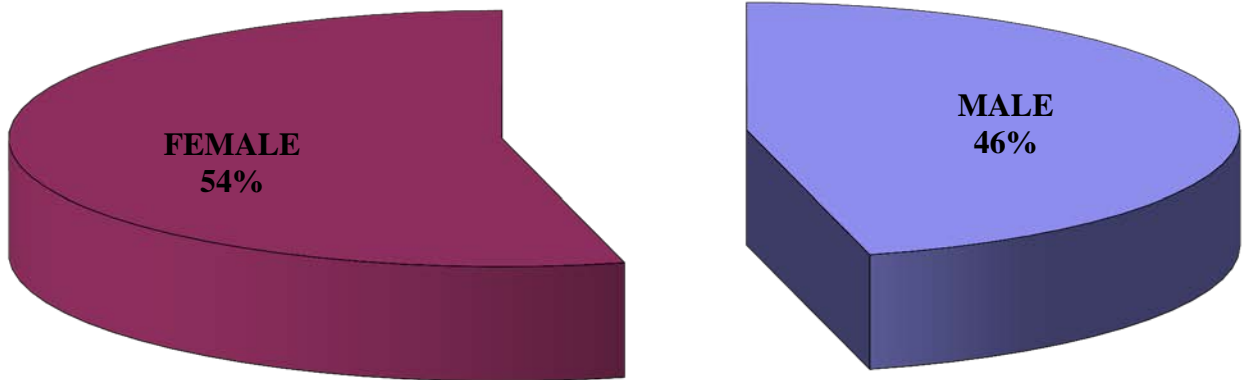
Note: The pie chart represents all AHC Staff. The small bar charts represent the percent of employee classification within each age group



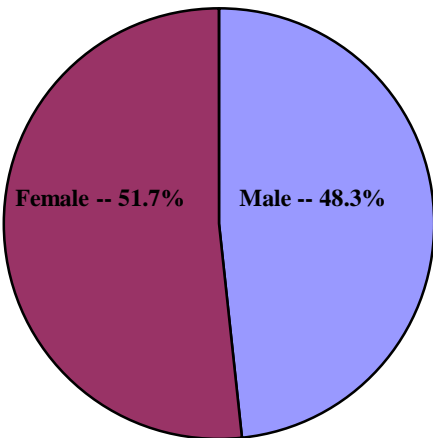
\*This report includes staff data from Nov. 1 to Oct. 31

# AHC Staff by Gender: 2012 to 2013

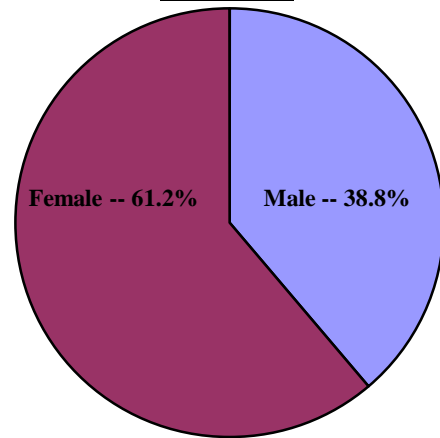
## All AHC Staff



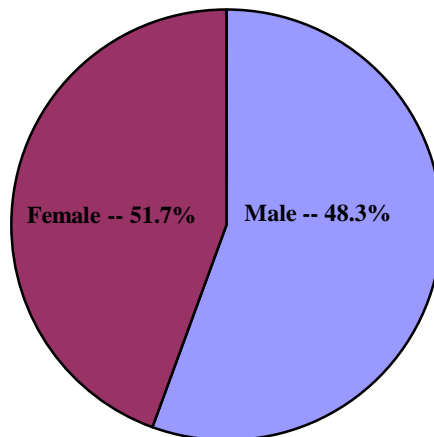
## Faculty



## Classified



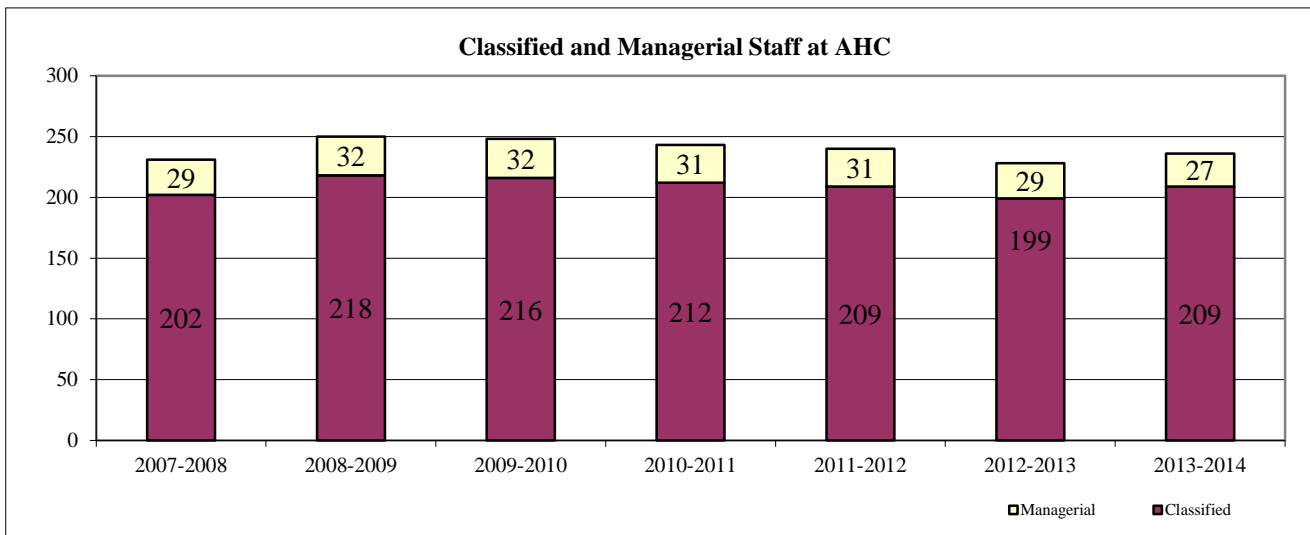
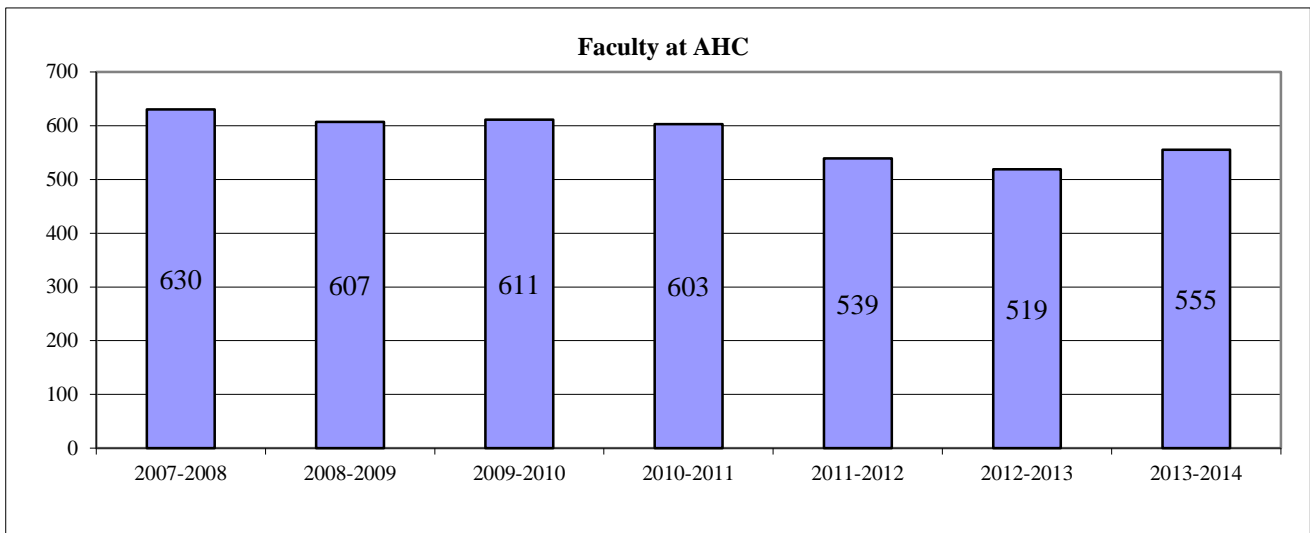
## Managerial



*\*This report includes staff data from Nov. 1 to Oct. 31*

## Staff Employee Statistical Totals: Historical Comparison

	2007-2008	2008-2009	2009-2010	2010-2011	2011-2012	2012-2013	2013-2014
<b>Faculty</b>							
Full Time	131	132	130	123	122	129	125
Part Time	395	362	385	385	335	310	353
Non-Credit Teaching	104	113	96	95	82	80	77
<i>Sub-Total:</i>	630	607	611	603	539	519	555
<b>Classified</b>							
Full Time Classified	196	213	209	201	196	192	194
Part Time Classified	6	5	7	11	13	7	15
<i>Sub-Total:</i>	202	218	216	212	209	199	209
<b>Managerial</b>	29	32	32	31	31	29	27
<b>Grand Total:</b>	<b>861</b>	<b>857</b>	<b>859</b>	<b>846</b>	<b>779</b>	<b>747</b>	<b>791</b>



\*This report includes staff data from Nov. 1 to Oct. 31

## Staff Employee Statistical Totals: 2012 to 2013

	COUNT	NEW HIRES	Age				
			< 30	30-44	45-54	55-64	65 +
Faculty							
Full Time	129	12	2	33	39	48	8
Part Time	310	112	13	78	76	94	49
Non-Credit Teaching	80	25	4	14	11	29	21
<i>Sub-Total:</i>	<b>519</b>	<b>149</b>	<b>19</b>	<b>125</b>	<b>126</b>	<b>171</b>	<b>78</b>
Classified							
Full Time Classified	192	18	12	53	60	56	11
Part Time Classified	7	3	0	0	2	5	0
<i>Sub-Total:</i>	<b>199</b>	<b>21</b>	<b>12</b>	<b>53</b>	<b>62</b>	<b>61</b>	<b>11</b>
Managerial	<b>29</b>	<b>3</b>	<b>0</b>	<b>2</b>	<b>9</b>	<b>16</b>	<b>2</b>
<b>Grand Total:</b>	<b>747</b>	<b>173</b>	<b>31</b>	<b>180</b>	<b>197</b>	<b>248</b>	<b>91</b>

PERCENT OF EMPLOYMENT CLASSIFICATION							
	% OF TOTAL		< 30	30-44	45-54	55-64	65 +
Faculty							
Full Time	17.3%		1.6%	25.6%	30.2%	37.2%	6.2%
Part Time	41.5%		4.2%	25.2%	24.5%	30.3%	15.8%
Non-Credit Teaching	10.7%		5.0%	17.5%	13.8%	36.3%	26.3%
<i>Sub-Total:</i>	<b>69.5%</b>		<b>3.7%</b>	<b>24.1%</b>	<b>24.3%</b>	<b>32.9%</b>	<b>15.0%</b>
Classified							
Full Time Classified	25.7%		6.3%	27.6%	31.3%	29.2%	5.7%
Part Time Classified	0.9%		0.0%	0.0%	28.6%	71.4%	0.0%
<i>Sub-Total:</i>	<b>26.6%</b>		<b>6.0%</b>	<b>26.6%</b>	<b>31.2%</b>	<b>30.7%</b>	<b>5.5%</b>
Managerial	<b>3.9%</b>		<b>0.0%</b>	<b>1.1%</b>	<b>4.6%</b>	<b>6.5%</b>	<b>2.2%</b>
<b>Grand Total:</b>	<b>100.0%</b>		<b>4.1%</b>	<b>24.1%</b>	<b>26.4%</b>	<b>33.2%</b>	<b>12.2%</b>

\*This report includes staff data from Nov. 1 to Oct. 31



## Staff Employee Statistical Totals: 2012 to 2013

	Ethnicity						Gender	
	NATIVE	ASIAN	BLACK	WHITE	HISPANIC	OTHER	MALE	FEMALE
Faculty								
Full Time	3	8	3	95	20	1	56	74
Part Time	3	12	7	254	35	1	164	146
Non-Credit Teaching	0	1	0	49	27	0	25	54
<i>Sub-Total:</i>	<b>6</b>	<b>21</b>	<b>10</b>	<b>398</b>	<b>82</b>	<b>2</b>	<b>245</b>	<b>274</b>
Classified								
Full Time Classified	3	4	5	119	61	0	75	117
Part Time Classified	0	0	0	7	0	0	1	6
<i>Sub-Total:</i>	<b>3</b>	<b>4</b>	<b>5</b>	<b>126</b>	<b>61</b>	<b>0</b>	<b>76</b>	<b>123</b>
Managerial	<b>0</b>	<b>2</b>	<b>1</b>	<b>21</b>	<b>5</b>	<b>0</b>	<b>14</b>	<b>15</b>
<b>Grand Total:</b>	<b>9</b>	<b>27</b>	<b>16</b>	<b>545</b>	<b>148</b>	<b>2</b>	<b>335</b>	<b>412</b>

PERCENT OF EMPLOYMENT CLASSIFICATION								
	NATIVE	ASIAN	BLACK	WHITE	HISPANIC	OTHER	MALE	FEMALE
Faculty								
Full Time	2.3%	6.2%	2.3%	73.6%	15.5%	0.8%	43.4%	57.4%
Part Time	1.0%	3.9%	2.3%	81.9%	11.3%	0.3%	52.9%	47.1%
Non-Credit Teaching	0.0%	1.3%	0.0%	61.3%	33.8%	0.0%	31.3%	67.5%
<i>Sub-Total:</i>	<b>1.2%</b>	<b>4.0%</b>	<b>1.9%</b>	<b>76.7%</b>	<b>15.8%</b>	<b>0.4%</b>	<b>47.2%</b>	<b>52.8%</b>
Classified								
Full Time Classified	1.6%	2.1%	2.6%	62.0%	31.8%	0.0%	39.1%	60.9%
Part Time Classified	0.0%	0.0%	0.0%	100.0%	0.0%	0.0%	14.3%	85.7%
<i>Sub-Total:</i>	<b>1.5%</b>	<b>2.0%</b>	<b>2.5%</b>	<b>63.3%</b>	<b>30.7%</b>	<b>0.0%</b>	<b>38.2%</b>	<b>61.8%</b>
Managerial	<b>0.0%</b>	<b>7.4%</b>	<b>6.3%</b>	<b>3.9%</b>	<b>3.4%</b>	<b>0.0%</b>	<b>4.2%</b>	<b>3.6%</b>
<b>Grand Total:</b>	<b>1.2%</b>	<b>3.6%</b>	<b>2.1%</b>	<b>73.0%</b>	<b>19.8%</b>	<b>0.3%</b>	<b>44.8%</b>	<b>55.2%</b>

\*This report includes staff data from Nov. 1 to Oct. 31

## Staff Employee Statistical Totals: 2012 to 2013

	NEW HIRES	Age				
		< 30	30-44	45-54	55-64	65 +
Faculty						
Full Time	12	1	5	2	4	0
Part Time	112	11	49	20	24	8
Non-Credit Teaching	25	4	9	4	6	2
<i>Faculty Sub-Total:</i>	<b>149</b>	<b>16</b>	<b>63</b>	<b>26</b>	<b>34</b>	<b>10</b>
Classified						
Full Time Classified	18	4	11	2	1	0
Part Time Classified	3	0	0	1	2	0
<i>Classified Sub-Total:</i>	<b>21</b>	<b>4</b>	<b>11</b>	<b>3</b>	<b>3</b>	<b>0</b>
Managerial	<b>3</b>	<b>0</b>	<b>0</b>	<b>0</b>	<b>3</b>	<b>0</b>
<b>Grand Total:</b>	<b>173</b>	<b>20</b>	<b>74</b>	<b>29</b>	<b>40</b>	<b>10</b>

PERCENT OF EMPLOYMENT CLASSIFICATION						
	% OF TOTAL	< 30	30-44	45-54	55-64	65 +
Faculty						
Full Time	6.9%	8.3%	41.7%	16.7%	33.3%	0.0%
Part Time	64.7%	9.8%	43.8%	17.9%	21.4%	7.1%
Non-Credit Teaching	14.5%	16.0%	36.0%	16.0%	24.0%	8.0%
<i>Faculty Sub-Total:</i>	<b>86.1%</b>	<b>10.7%</b>	<b>42.3%</b>	<b>17.4%</b>	<b>22.8%</b>	<b>6.7%</b>
Classified						
Full Time Classified	10.4%	22.2%	61.1%	11.1%	5.6%	0.0%
Part Time Classified	1.7%	0.0%	0.0%	33.3%	66.7%	0.0%
<i>Classified Sub-Total:</i>	<b>12.1%</b>	<b>19.0%</b>	<b>52.4%</b>	<b>14.3%</b>	<b>14.3%</b>	<b>0.0%</b>
Managerial	<b>1.7%</b>	<b>0.0%</b>	<b>0.0%</b>	<b>0.0%</b>	<b>7.5%</b>	<b>0.0%</b>
<b>Grand Total:</b>	<b>100.0%</b>	<b>11.6%</b>	<b>42.8%</b>	<b>16.8%</b>	<b>23.1%</b>	<b>5.8%</b>

\*This report includes staff data from Nov. 1 to Oct. 31

## Staff Employee Statistical Totals: 2012 to 2013

	Ethnicity						Gender	
	NATIVE	ASIAN	BLACK	WHITE	HISPANIC	OTHER	MALE	FEMALE
Faculty								
Full Time	0		0	10	1	1	6	6
Part Time	1	6	1	86	18	0	53	59
Non-Credit Teaching	0	1	2	12	10	0	8	17
<i>Faculty Sub-Total:</i>	<b>1</b>	<b>7</b>	<b>3</b>	<b>108</b>	<b>29</b>	<b>1</b>	<b>67</b>	<b>82</b>
Classified								
Full Time Classified	0	0	1	7	10	0	12	6
Part Time Classified	0	0	0	3	0	0	0	3
<i>Classified Sub-Total:</i>	<b>0</b>	<b>0</b>	<b>1</b>	<b>10</b>	<b>10</b>	<b>0</b>	<b>12</b>	<b>9</b>
Managerial	<b>0</b>	<b>1</b>	<b>0</b>	<b>1</b>	<b>1</b>	<b>0</b>	<b>1</b>	<b>2</b>
<b>Grand Total:</b>	<b>1</b>	<b>8</b>	<b>4</b>	<b>119</b>	<b>40</b>	<b>1</b>	<b>80</b>	<b>93</b>

PERCENT OF EMPLOYMENT CLASSIFICATION								
	NATIVE	ASIAN	BLACK	WHITE	HISPANIC	OTHER	MALE	FEMALE
Faculty								
Full Time	0.0%	0.0%	0.0%	83.3%	8.3%	8.3%	50.0%	50.0%
Part Time	0.9%	5.4%	0.9%	76.8%	16.1%	0.0%	47.3%	52.7%
Non-Credit Teaching	0.0%	4.0%	8.0%	48.0%	40.0%	0.0%	32.0%	68.0%
<i>Faculty Sub-Total:</i>	<b>0.7%</b>	<b>4.7%</b>	<b>2.0%</b>	<b>72.5%</b>	<b>19.5%</b>	<b>0.7%</b>	<b>45.0%</b>	<b>55.0%</b>
Classified								
Full Time Classified	0.0%	0.0%	5.6%	38.9%	55.6%	0.0%	66.7%	33.3%
Part Time Classified	0.0%	0.0%	0.0%	100.0%	0.0%	0.0%	0.0%	100.0%
<i>Classified Sub-Total:</i>	<b>0.0%</b>	<b>0.0%</b>	<b>4.8%</b>	<b>47.6%</b>	<b>47.6%</b>	<b>0.0%</b>	<b>57.1%</b>	<b>42.9%</b>
Managerial	<b>0.0%</b>	<b>12.5%</b>	<b>0.0%</b>	<b>0.8%</b>	<b>2.5%</b>	<b>0.0%</b>	<b>1.3%</b>	<b>2.2%</b>
<b>Grand Total:</b>	<b>0.6%</b>	<b>4.6%</b>	<b>2.3%</b>	<b>68.8%</b>	<b>23.1%</b>	<b>0.6%</b>	<b>46.2%</b>	<b>53.8%</b>

\*This report includes staff data from Nov. 1 to Oct. 31

## Staff Employee Statistical Totals: 2013 to 2014

	COUNT	NEW HIRES	Age				
			< 30	30-44	45-54	55-64	65 +
Faculty							
Full Time	125	14	0	32	35	47	11
Part Time	353	167	20	104	83	88	58
Non-Credit Teaching	77	26	6	13	10	27	21
<i>Sub-Total:</i>	<b>555</b>	<b>207</b>	<b>26</b>	<b>149</b>	<b>128</b>	<b>162</b>	<b>90</b>
Classified							
Full Time Classified	194	26	11	59	49	63	12
Part Time Classified	15	11	1	1	4	8	1
<i>Sub-Total:</i>	<b>209</b>	<b>37</b>	<b>12</b>	<b>60</b>	<b>53</b>	<b>71</b>	<b>13</b>
Managerial	<b>27</b>	<b>2</b>	<b>0</b>	<b>2</b>	<b>7</b>	<b>14</b>	<b>4</b>
<b>Grand Total:</b>	<b>791</b>	<b>246</b>	<b>38</b>	<b>211</b>	<b>188</b>	<b>247</b>	<b>107</b>

PERCENT OF EMPLOYMENT CLASSIFICATION							
	% OF TOTAL		< 30	30-44	45-54	55-64	65 +
Faculty							
Full Time	15.8%		0.0%	25.6%	28.0%	37.6%	8.8%
Part Time	44.6%		5.7%	29.5%	23.5%	24.9%	16.4%
Non-Credit Teaching	9.7%		7.8%	16.9%	13.0%	35.1%	27.3%
<i>Sub-Total:</i>	<b>70.2%</b>		<b>4.7%</b>	<b>26.8%</b>	<b>23.1%</b>	<b>29.2%</b>	<b>16.2%</b>
Classified							
Full Time Classified	24.5%		5.7%	30.4%	25.3%	32.5%	6.2%
Part Time Classified	1.9%		6.7%	6.7%	26.7%	53.3%	6.7%
<i>Sub-Total:</i>	<b>26.4%</b>		<b>5.7%</b>	<b>28.7%</b>	<b>25.4%</b>	<b>34.0%</b>	<b>6.2%</b>
Managerial	<b>3.4%</b>		<b>0.0%</b>	<b>0.9%</b>	<b>3.7%</b>	<b>5.7%</b>	<b>3.7%</b>
<b>Grand Total:</b>	<b>100.0%</b>		<b>4.8%</b>	<b>26.7%</b>	<b>23.8%</b>	<b>31.2%</b>	<b>13.5%</b>

\*This report includes staff data from Nov. 1 to Oct. 31

## Staff Employee Statistical Totals: 2013 to 2014

	Ethnicity						Gender	
	NATIVE	ASIAN	BLACK	WHITE	HISPANIC	OTHER	MALE	FEMALE
Faculty								
Full Time	0	7	3	90	21	4	59	66
Part Time	1	15	4	278	46	9	184	169
Non-Credit Teaching	0	2	1	49	23	2	25	52
<i>Sub-Total:</i>	<b>1</b>	<b>24</b>	<b>8</b>	<b>417</b>	<b>90</b>	<b>15</b>	<b>268</b>	<b>287</b>
Classified								
Full Time Classified	3	4	3	122	62	0	76	118
Part Time Classified	0	0	1	13	1	0	5	10
<i>Sub-Total:</i>	<b>3</b>	<b>4</b>	<b>4</b>	<b>135</b>	<b>63</b>	<b>0</b>	<b>81</b>	<b>128</b>
Managerial	<b>0</b>	<b>2</b>	<b>0</b>	<b>21</b>	<b>4</b>	<b>0</b>	<b>15</b>	<b>12</b>
<b>Grand Total:</b>	<b>4</b>	<b>30</b>	<b>12</b>	<b>573</b>	<b>157</b>	<b>15</b>	<b>364</b>	<b>427</b>

PERCENT OF EMPLOYMENT CLASSIFICATION								
	NATIVE	ASIAN	BLACK	WHITE	HISPANIC	OTHER	MALE	FEMALE
Faculty								
Full Time	0.0%	5.6%	2.4%	72.0%	16.8%	3.2%	47.2%	52.8%
Part Time	0.3%	4.2%	1.1%	78.8%	13.0%	2.5%	52.1%	47.9%
Non-Credit Teaching	0.0%	2.6%	1.3%	63.6%	29.9%	2.6%	32.5%	67.5%
<i>Sub-Total:</i>	<b>0.2%</b>	<b>4.3%</b>	<b>1.4%</b>	<b>75.1%</b>	<b>16.2%</b>	<b>2.7%</b>	<b>48.3%</b>	<b>51.7%</b>
Classified								
Full Time Classified	1.5%	2.1%	1.5%	62.9%	32.0%	0.0%	39.2%	60.8%
Part Time Classified	0.0%	0.0%	6.7%	86.7%	6.7%	0.0%	33.3%	66.7%
<i>Sub-Total:</i>	<b>1.4%</b>	<b>1.9%</b>	<b>1.9%</b>	<b>64.6%</b>	<b>30.1%</b>	<b>0.0%</b>	<b>38.8%</b>	<b>61.2%</b>
Managerial	<b>0.0%</b>	<b>6.7%</b>	<b>0.0%</b>	<b>3.7%</b>	<b>2.5%</b>	<b>0.0%</b>	<b>4.1%</b>	<b>2.8%</b>
<b>Grand Total:</b>	<b>0.5%</b>	<b>3.8%</b>	<b>1.5%</b>	<b>72.4%</b>	<b>19.8%</b>	<b>1.9%</b>	<b>46.0%</b>	<b>54.0%</b>

\*This report includes staff data from Nov. 1 to Oct. 31

## Staff Employee Statistical Totals: 2013 to 2014

	NEW HIRES	Age				
		< 30	30-44	45-54	55-64	65 +
Faculty						
Full Time	14	0	7	2	5	0
Part Time	167	18	75	30	27	17
Non-Credit Teaching	26	6	8	3	7	2
<i>Faculty Sub-Total:</i>	207	24	90	35	39	19
Classified						
Full Time Classified	26	4	17	2	3	0
Part Time Classified	11	1	1	4	4	1
<i>Classified Sub-Total:</i>	37	5	18	6	7	1
Managerial	2	0	0	1	1	0
<b>Grand Total:</b>	<b>246</b>	<b>29</b>	<b>108</b>	<b>42</b>	<b>47</b>	<b>20</b>

PERCENT OF EMPLOYMENT CLASSIFICATION						
	% OF TOTAL	< 30	30-44	45-54	55-64	65 +
Faculty						
Full Time	5.7%	0.0%	50.0%	14.3%	35.7%	0.0%
Part Time	67.9%	10.8%	44.9%	18.0%	16.2%	10.2%
Non-Credit Teaching	10.6%	23.1%	30.8%	11.5%	26.9%	7.7%
<i>Faculty Sub-Total:</i>	84.1%	11.6%	43.5%	16.9%	18.8%	9.2%
Classified						
Full Time Classified	10.6%	15.4%	65.4%	7.7%	11.5%	0.0%
Part Time Classified	4.5%	9.1%	9.1%	36.4%	36.4%	9.1%
<i>Classified Sub-Total:</i>	15.0%	13.5%	48.6%	16.2%	18.9%	2.7%
Managerial	0.8%	0.0%	0.0%	2.4%	2.1%	0.0%
<b>Grand Total:</b>	<b>100.0%</b>	<b>11.8%</b>	<b>43.9%</b>	<b>17.1%</b>	<b>19.1%</b>	<b>8.1%</b>

\*This report includes staff data from Nov. 1 to Oct. 31

## Staff Employee Statistical Totals: 2013 to 2014

	Ethnicity						Gender	
	NATIVE	ASIAN	BLACK	WHITE	HISPANIC	OTHER	MALE	FEMALE
Faculty								
Full Time	0	0	0	11	2	1	9	5
Part Time	1	8	3	128	25	2	83	84
Non-Credit Teaching	0	1	1	12	10	2	7	19
<i>Faculty Sub-Total:</i>	1	9	4	151	37	5	99	108
Classified								
Full Time Classified	0	0	0	13	13	0	14	12
Part Time Classified	0	0	1	9	1	0	4	7
<i>Classified Sub-Total:</i>	0	0	1	22	14	0	18	19
Managerial	0	0	0	2	0	0	2	0
<b>Grand Total:</b>	<b>1</b>	<b>9</b>	<b>5</b>	<b>175</b>	<b>51</b>	<b>5</b>	<b>119</b>	<b>127</b>

PERCENT OF EMPLOYMENT CLASSIFICATION								
	NATIVE	ASIAN	BLACK	WHITE	HISPANIC	OTHER	MALE	FEMALE
Faculty								
Full Time	0.0%	0.0%	0.0%	78.6%	14.3%	7.1%	64.3%	35.7%
Part Time	0.6%	4.8%	1.8%	76.6%	15.0%	1.2%	49.7%	50.3%
Non-Credit Teaching	0.0%	3.8%	3.8%	46.2%	38.5%	7.7%	26.9%	73.1%
<i>Faculty Sub-Total:</i>	0.5%	4.3%	1.9%	72.9%	17.9%	2.4%	47.8%	52.2%
Classified								
Full Time Classified	0.0%	0.0%	0.0%	50.0%	50.0%	0.0%	53.8%	46.2%
Part Time Classified	0.0%	0.0%	9.1%	81.8%	9.1%	0.0%	36.4%	63.6%
<i>Classified Sub-Total:</i>	0.0%	0.0%	2.7%	59.5%	37.8%	0.0%	48.6%	51.4%
Managerial	0.0%	0.0%	0.0%	1.1%	0.0%	0.0%	1.7%	0.0%
<b>Grand Total:</b>	<b>0.4%</b>	<b>3.7%</b>	<b>2.0%</b>	<b>71.1%</b>	<b>20.7%</b>	<b>2.0%</b>	<b>48.4%</b>	<b>51.6%</b>

\*This report includes staff data from Nov. 1 to Oct. 31