

CHOOSE A MAJOR/CAREER WORKSHEET

On this worksheet, you will check the words below that best describe you in six interest areas. It is ok to mark the same word more than once. Using the three highest-scoring areas of your worksheet, you can identify corresponding majors and careers at Allan Hancock College to explore based on Holland's Hexagram of Interests (see other side).

R - REALISTIC

- Conforming
- Straightforward
- Honest
- Humble
- Athletic
- Natural
- Persistent
- Practical
- Modest
- Active
- Stable
- Thrifty
- Do you like to create or fix things with your hands?
- Do you enjoy working with tools, machines or animals rather than people?
- Do you like to do physically active tasks or work outdoors?

___ # of Total Checks in - R

I - INVESTIGATIVE

- Analytical
- Cautious
- Investigative
- Curious
- Independent
- Intellectual
- Introspective
- Complex
- Scientific
- Precise
- Rational
- Observant
- Do you like to observe and analyze abstract problems?
- Are you interested in science, math & understanding the physical world?
- Do you prefer to work independently?

___ # of Total Checks in - I

A - ARTISTIC

- Complicated
- Creative
- Emotional
- Expressive
- Idealistic
- Imaginative
- Open
- Impulsive
- Independent
- Intuitive
- Nonconforming
- Original
- Do you prefer to work independently or in unstructured situations?
- Are you imaginative, artistic, intuitive, or individualistic?
- Are yourself creative, unconventional & expressive?

___ # of Total Checks in - A

S - SOCIAL

- Patient
- Cooperative
- Friendly
- Generous
- Helpful
- Idealistic
- Insightful
- Kind
- Responsible
- Sociable
- Tactful
- Understanding
- Do you enjoy solving problems by discussion?
- Can you plan and supervise or teach an activity to others?
- Do others seek out your advice and companionship?
- Do you enjoy social events such as meetings or team sports?

___ # of Total Checks in - S

E - ENTERPRISING

- Adventurous
- Ambitious
- Entrepreneurial
- Assertive
- Energetic
- Impulsive
- Optimistic
- Results oriented
- Popular
- Self-Confident
- Sociable
- Talkative
- Do you like competition?
- Do you place a high value on money and material things?
- Do you enjoy leading others and persuading people?
- Are you self confident, ambitious, and independent?

___ # of Total Checks in - E

C - CONVENTIONAL

- Conforming
- Conscientious
- Accurate
- Structured
- Attentive to detail
- Methodical
- Orderly
- Persistent
- Practical
- Self-Controlled
- Polite
- Efficient
- Do you prefer structured situations and defined tasks?
- Do you like working with numbers or collecting and organizing information?
- Do you consider yourself methodical and organized?
- Are you conscientious, efficient, and organized?

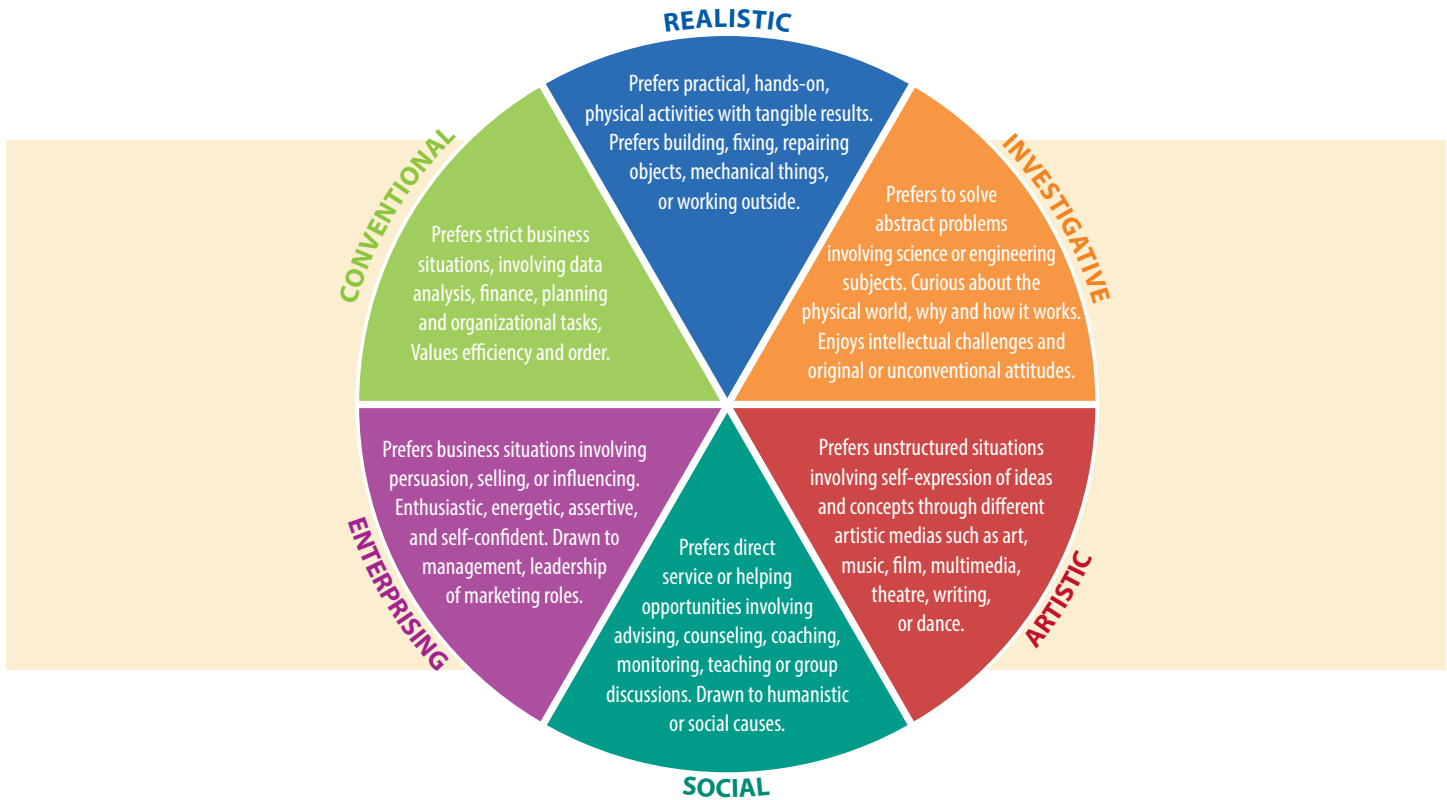
___ # of Total Checks in - C



In which three categories do you have the most check marks? _____

For advising on your three category combinations, stop by the Career/Job Placement Center (Building A, Room A-207) or call 805-922-6966 ext. 3374.

HOLLAND'S CATEGORIES OF INTEREST



REALISTIC

Realistic people are rugged, practical, physically strong, enjoy working outdoors and working with machinery. They prefer to deal with things, rather than ideas or people, and enjoy creating things with their hands. They describe themselves as practical, persistent and stable.

Related Majors & Programs

Administration of Justice
Auto Body
Auto Technology
Baking
Culinary Arts
Design/Technical Theatre
Drafting/CAD, Electronics
Technology
Emergency Medical Services/
EMT
Environmental Health and
Safety Law Enforcement
Firefighting
Training/Academy
Machining & Manufacturing
Physical Education
Welding Technology

INVESTIGATIVE

Prefer to solve abstract problems involving science or engineering subjects. Curious about the physical world, why, and how it works. They enjoy intellectual challenges and original or unconventional attitudes.

Related Majors & Programs

Agribusiness
Anthropology
Chemistry
Civil Engineering
Computer Science
Electronic Engineering
Technology
Engineering
Enology/Viticulture
Environmental Science
Mathematics
Nursing
Office Systems Analysis
Physics
Psychology
Registered Veterinarian
Technician

ARTISTIC

Artistic people like to work in artistic settings that offer many opportunities for self-expression. They prefer to work alone have a great need for individual expression, and have little interest in problems that are highly structured or require physical strength. They tend to prefer problems that can be solved through self-expression and artistic media.

Related Majors & Programs

Applied Design/Media
Architectural Drafting
Art
Cosmetology
Culinary Arts
Dance
Design/Technical Theater
Drama
English
Fashion Studies
Film & Video Production
Interior Design Merchandising
Music
Photography
Sound Recording

SOCIAL

Social people are sociable, responsible, humanistic, and concerned with the welfare of others. They express themselves and get along well with others. They prefer to solve problems by discussions or by arranging relationships with others. They describe themselves as cheerful, popular, and achieving and a good leader.

Related Majors & Programs

Administration of Justice
Communications
Cosmetology
Dental Assisting
Early Childhood Studies
Emergency Medical Services/
EMT
Human Services
Medical Assisting
Nursing, CNA, RN, LVN
Physical Education
Political Science
Psychology
Recreation Management
Sociology
Spanish

ENTERPRISING

Enterprising people have a facility with words, particularly in selling, dominating, and leading. They see themselves as enthusiastic, adventurous, self-confident, and dominant. They prefer social tasks where they can assume leadership, and like power, status, material wealth, and enjoy working in expensive settings.

Related Majors & Programs

Accounting
Agribusiness
Business Administration
Communications
Cosmetology
Entrepreneurship
Finance
Human Resource Management
Management and Marketing
Political Science
Real Estate
Recreation Management
Restaurant Management

CONVENTIONAL

Conventional people prefer highly ordered activities, both verbal and numerical, that characterize office offer. They fit well into large organizations but do not seek leadership. They are comfortable working in a well-established chain of command. They describe themselves as stable, well-controlled and dependable

Related Majors & Programs

Accounting
Bookkeeping
Business Administration
Computer Business Info.
Systems
Computer Business Office
Technology
Computer Science
Dental Assisting
Economics
Hospitality
Legal Secretarial
Management
Medical Billing & Coding
Paralegal